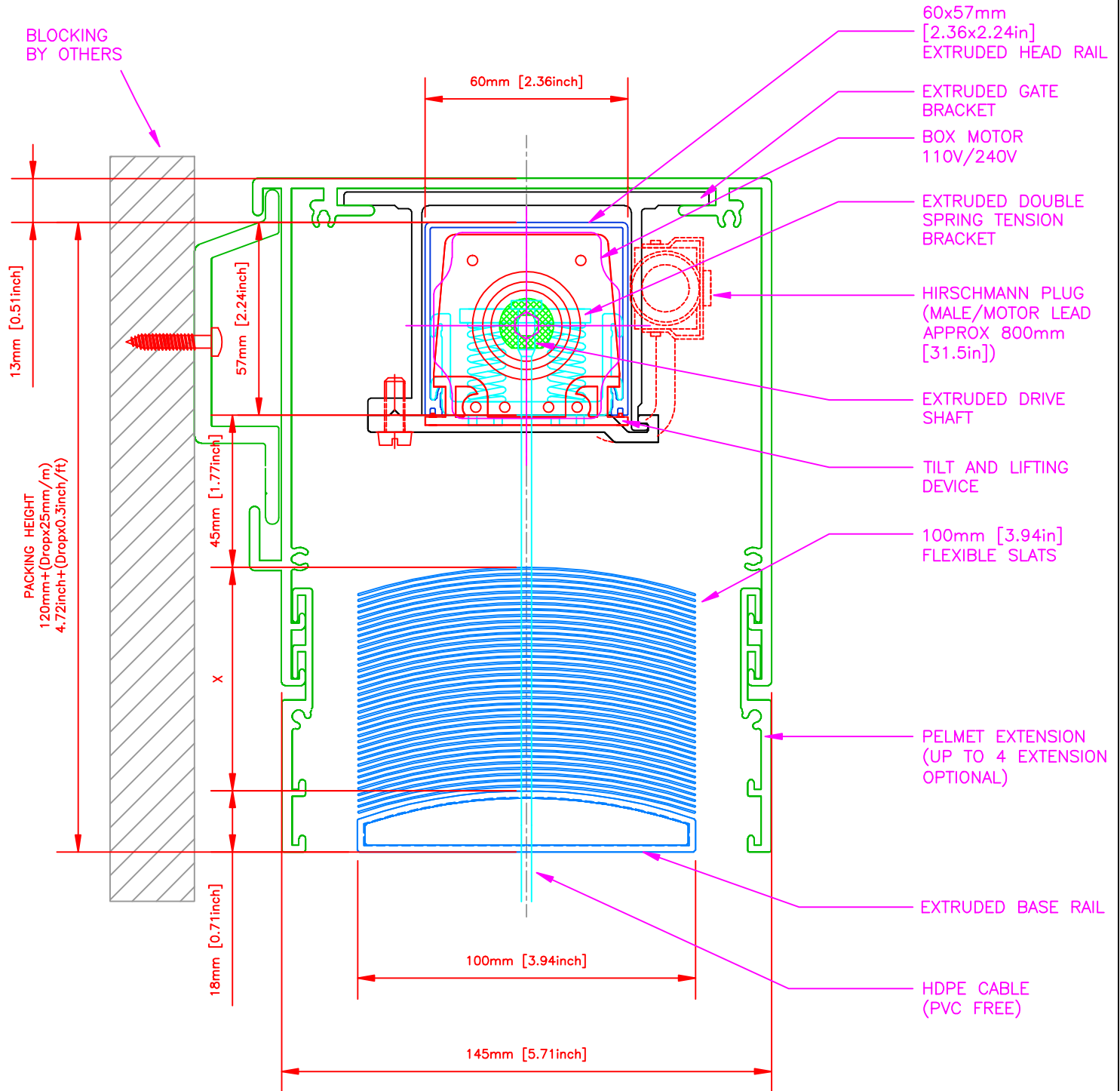


HORISO SVB 100 AK-S

FACE FIX Horiso PELMET/FASCIA



INSATALLATION CONDITION:

FACE FIX Horiso PELMET/FASCIA

BLIND TYPE

Horiso SVB 100 AK-S

horiso

www.horiso.com

REV	DESCRIPTION	DATE	APPROVED
A	INITIAL DRAWING	20/02/12	NK

DRAWN:

APPROVED SIGNATURE

SIZE:	FSCM NO:	DWG NO: 20120220-2-2-IMP	REV A
SCALE:	DATE: 20/02/12	SHEET	

T: 1(888)556-8676