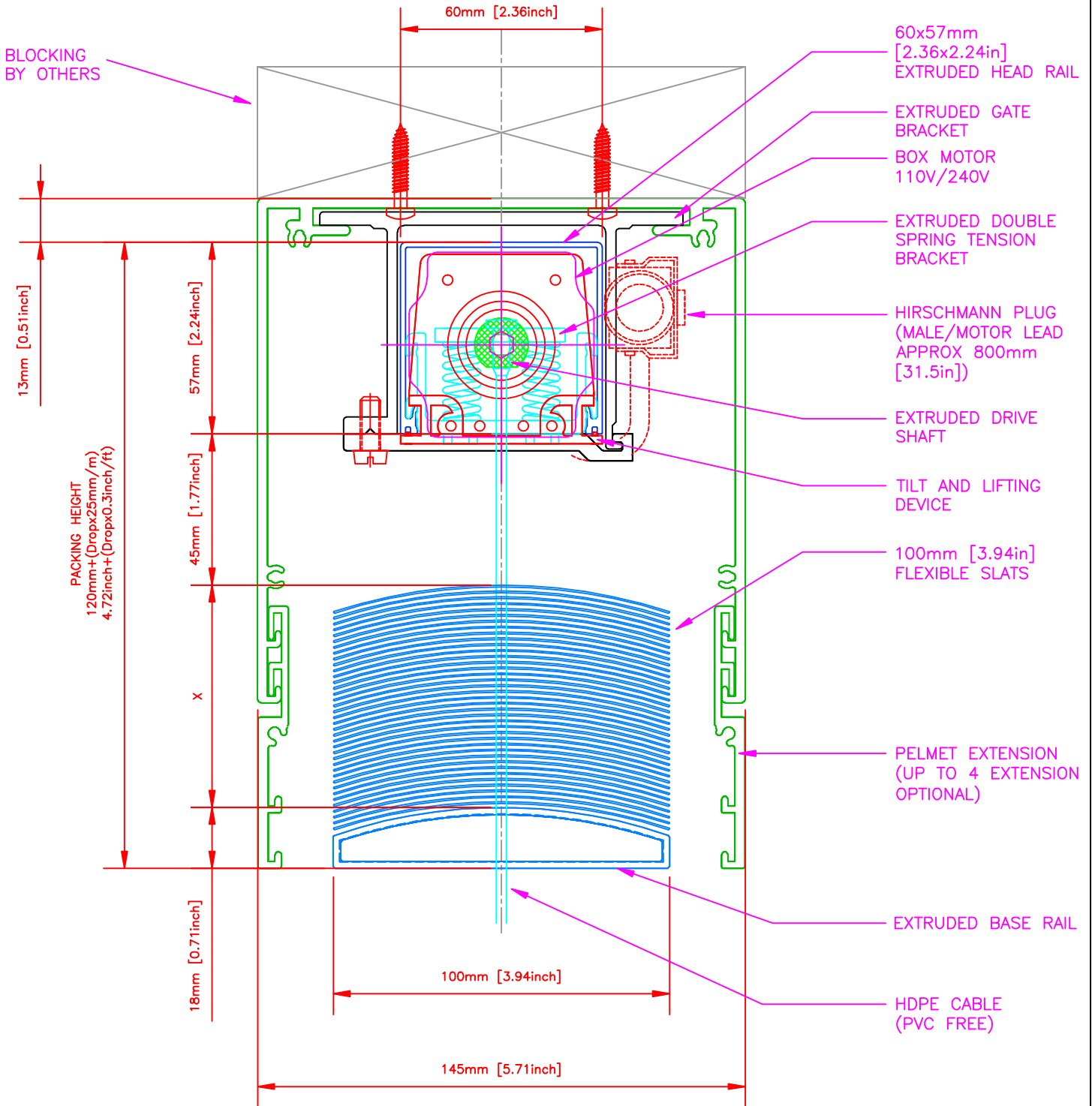


# HORISO SVB 100 AK-S

TOP FIX Horiso PELMET/FASCIA



INSATALLATION CONDITION: TOP FIX Horiso PELMET/FASCIA				BLIND TYPE Horiso SVB 100 AK-S		<b>horiso</b> <sup>®</sup>		www.horiso.com	
REV	DESCRIPTION	DATE	APPROVED	DRAWN:				APPROVED SIGNATURE	
A	INITIAL DRAWING	07/02/12	NK						
				SIZE:	FSCM NO:	DWG NO:	20120207-2-2-IMP	REV	A
				SCALE:	DATE:	07/02/12	SHEET		T: 1(888)556-8676