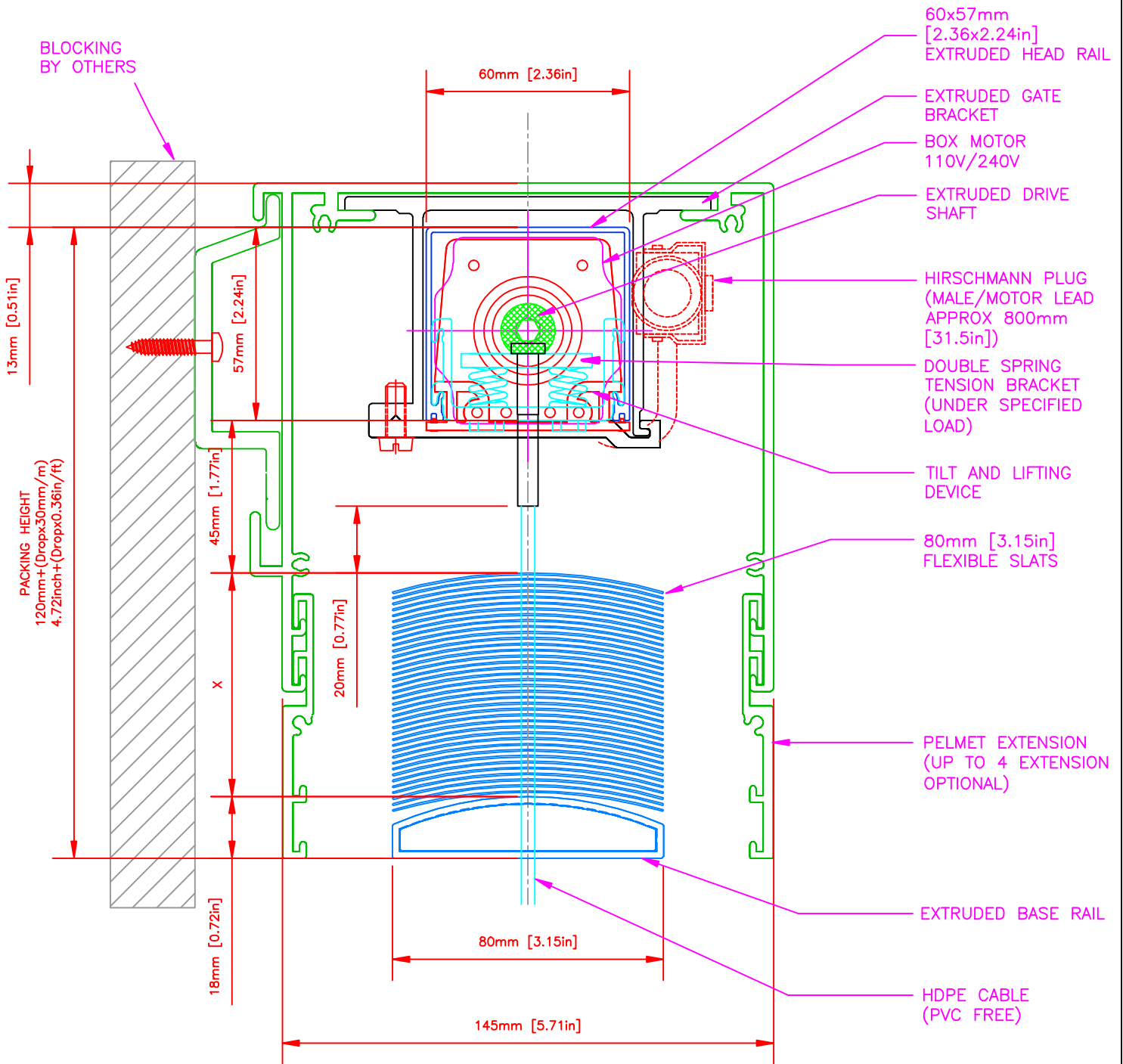


HORISO SVB 80 AK-S

FACE FIX Horiso PELMET/FASCIA



INSATALLATION CONDITION:

FACE FIX Horiso PELMET/FASCIA

BLIND TYPE

Horiso SVB 80 AK-S

horiso

www.horiso.com

REV	DESCRIPTION	DATE	APPROVED
A	INITIAL DRAWING	20/02/12	NK
B	UNDER SPECIFIED LOAD	31/08/12	NK

DRAWN:

SIZE: FSCM NO: DWG NO: 20120220-1-2-IMP REV B

SCALE: DATE: 31/08/12 SHEET

APPROVED SIGNATURE

T: 1(888)556-8676