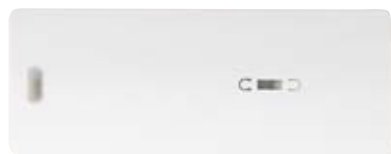


## 6 Standard colors



White - RAL 9016.



Light Silver - RAL 9006.



Dark Brown - RAL 8019.



Bronze - HOR 7140.



Silver Pearl - RAL 9007.



Storm Pearl - HOR 7043.

## Aluminum slats

Crowned aluminum slats are made from a highly elastic alloy, making them flexible, scratch-proof and shock-proof. Metal slat gauge size of 1/56" (0.45 mm). Cable punch slat inserts are at both ends of every slat.

The double omega punch, (standard on external and double skin facade installations) in combination with the ladder braid ensures smooth closing of the louvers. They also retain slat alignment and stability in most weather conditions and minimize excessive movement. No additional plastic components are necessary to stabilise the louvers.

### Pre-treatment

- ▶ AA 5050 marine grade with chromate conversion undercoat.

### Standard finish

- ▶ PE3 - Polyester 3 layer coil coating.
- ▶ Double oven baked edge coating.

### Optional finish

- ▶ "DecoWood" type finish.
- ▶ Other custom finishes available on request.

### Colours

- ▶ 6 standard colors.
- ▶ Custom colors available on request.\*

\*Minimum quantity order may apply. Color sample reproduction is a guide only. Please consult your representative.



3" (80 mm) slat.



4" (100 mm) slat.



6" (150 mm) slat.

### Standard slat widths

- ▶ 3", 4", & 6" (80 mm, 100 mm & 150 mm)  
Solid or perforated are available in all louver widths.
- ▶ Custom louver widths available on request.